

MODEL HOME FOR SALE




Home Priced At

\$569,990

Plan: Harper Villa

Elevation: Harper

 **3** Bedrooms

 **3.5** Bathrooms

 **2,141** Sq. Ft.

Own a piece of the flagship experience with **The Harper Model Home**, now available for sale at The Preserve at Gilbert Meadows. As a premium end-of-group villa, this home enjoys extra privacy, additional natural light, and the highest level of designer-curated upgrades offered by Sage Homes.

From the professionally landscaped exterior to the sophisticated interior finishes, this showcase property is designed for those who want the "everything included" lifestyle.

Main-Level Luxury & Outdoor Living

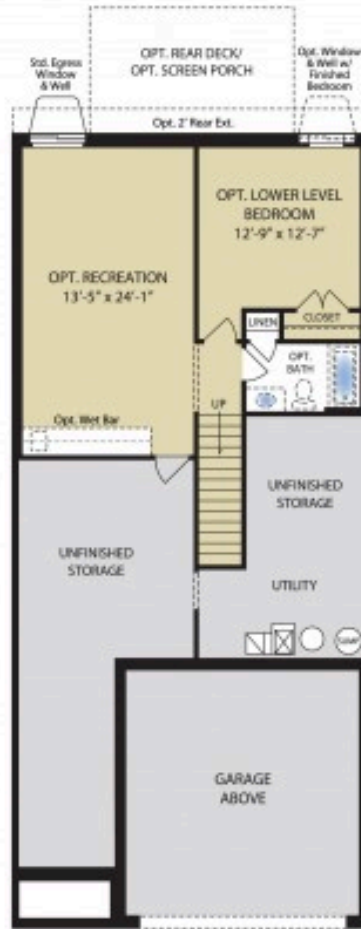
Step into a sun-drenched floor plan where high-end finishes meet functional design. The massive family room flows effortlessly into a gourmet kitchen, anchored by an oversized island and a walk-in pantry.

- **Rear Screened Porch:** Extend your living space outdoors with a private, screened-in porch—perfect for enjoying morning coffee or evening breezes in a bug-free environment.
- **Owner's Suite:** The first-floor retreat features a double-bowl vanity, a seated shower with custom ceramic tile, and a generous walk-in closet.

Elevated Second Floor & Custom Study

All square footage is approximate. Renderings are artist's conceptions and may vary slightly from the actual home. Homes may be built in reverse of plans shown, depending on site conditions. Minor architectural changes may be made occasionally at the option of the homeowner. The upper level is a masterclass in flexibility. In addition to the airy loft overlooking the family room and two spacious guest bedrooms, the standard storage room has been professionally

Basement Options_Harper



NOTE: All renderings are for illustrative purposes only and not part of a legal contract. Although all illustrations and specifications are believed correct at time of publication, accuracy cannot be guaranteed. The right is reserved to make changes.

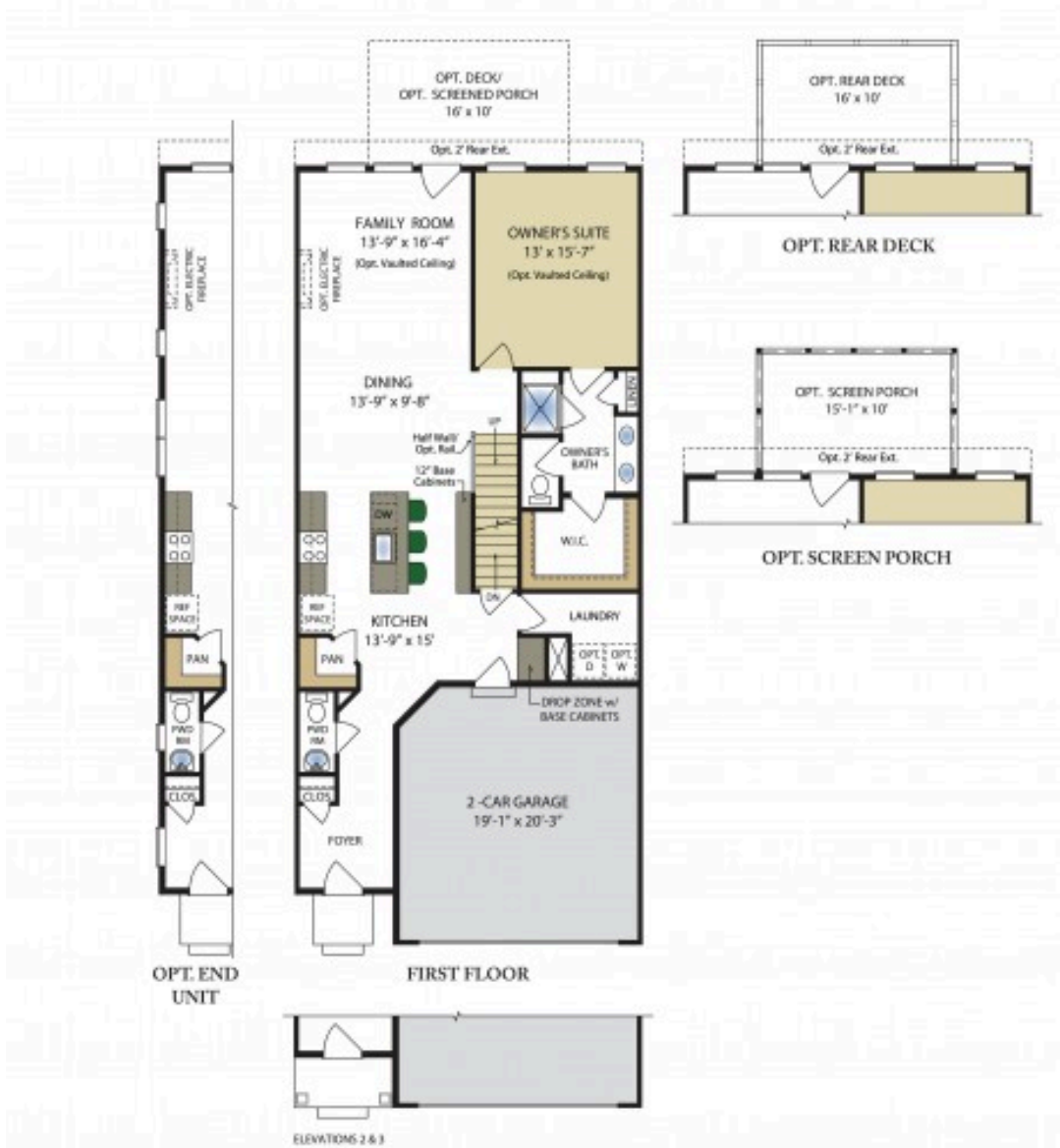
MIBR# 6113



Finished Basement Options

All square footage is approximate. Renderings are artist's conceptions and may vary slightly from the actual home. Homes may be built in reverse of plans shown, depending on site conditions. Minor architectural changes may be made occasionally at the option of the builder. Please contact your Sales Consultant for details.

1st Floor Opt._Harper



First Floor Options

All square footage is approximate. Renderings are artist's conceptions and may vary slightly from the actual home. Homes may be built in reverse of plans shown, depending on site conditions. Minor architectural changes may be made occasionally at the option of the builder. Please contact your Sales Consultant for details.

2nd Floor Opt._Harper



Second Floor Options

All square footage is approximate. Renderings are artist's conceptions and may vary slightly from the actual home. Homes may be built in reverse of plans shown, depending on site conditions. Minor architectural changes may be made occasionally at the option of the builder. Please contact your Sales Consultant for details.