



Home Priced At  
**\$499,990**

**Plan:** Harper Villa

-  **3** Bedrooms
-  **3.5** Bathrooms
-  **2,480** Sq. Ft.

## Move-In Ready Villa: 2,141 Sq. Ft. of Luxury!

**Address:** 3636 Dexter Court, Aberdeen, MD | Homesite #142 **Offered at \$499,990**

Skip the construction wait! This Harper villa by Sage Homes is 100% complete and ready for you. Featuring 3 bedrooms, 3.5 baths, and a 2-car garage, this home is the ultimate solution for buyers wanting a first-floor owner's suite and a low-maintenance lifestyle.

### Why You'll Love This Home:

- **Seamless Entertaining:** Open-concept family room and dining area with a high-end kitchen.
- **Guest Privacy:** The upper-level loft and bedrooms create a perfect separate space for visitors or family.
- **Bonus Living Space:** Fully finished basement recreation room with a full bath.
- **Storage Galore:** Includes a dedicated upper-level storage room and walk-in pantry.
- **Prime Location:** Quick access to Route 22, shopping, and Harford County dining.

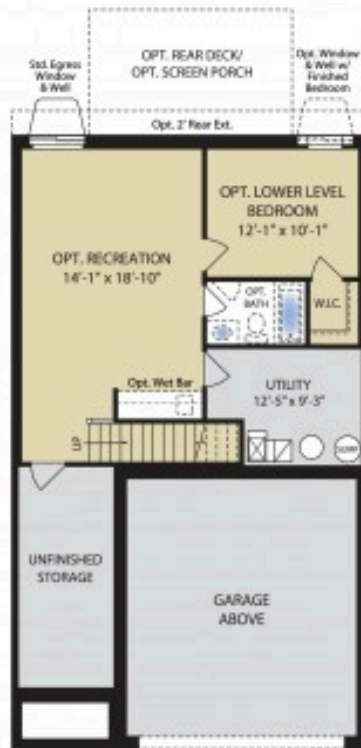
### Schedule Your Showing Today:

All square footage is approximate. Renderings are artist's conceptions and may vary slightly from the actual home. Homes may be built in reverse of plans shown, depending on site conditions. Minor architectural changes may be made occasionally at the option of the builder. Please contact your Sales Consultant for details.

• **Contact:** Holly

• **Call/Text:** 443-827-3166

**Gilbert Meadows-Homesite #142 - The Harper | New Home in Aberdeen, MD**



NOTE: All renderings are for illustrative purposes only and are not part of a legal contract. Although all illustrations and specifications are believed correct at time of publication, accuracy cannot be guaranteed. The right is reserved to make changes.

MHBM 6113



*Finished Basement Options*

All square footage is approximate. Renderings are artist's conceptions and may vary slightly from the actual home. Homes may be built in reverse of plans shown, depending on site conditions. Minor architectural changes may be made occasionally at the option of the builder. Please contact your Sales Consultant for details.

Gilbert Meadows-Homesite #142 - The Harper | New Home in Aberdeen, MD



*First Floor Options*

All square footage is approximate. Renderings are artist's conceptions and may vary slightly from the actual home. Homes may be built in reverse of plans shown, depending on site conditions. Minor architectural changes may be made occasionally at the option of the builder. Please contact your Sales Consultant for details.

