




Home Priced At

**\$410,140**

**Plan:** Abigail

 **3** Bedrooms

 **3.5** Bathrooms

 **2,319** Sq. Ft.

## Quick Move-In: Fully Loaded & Ready Now!

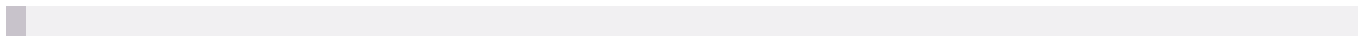
**Homesite #175** • 334 Aqua Square, Edgewood, MD (Trimble Meadows)

Step inside and immediately feel the difference. This striking, fully finished townhome is packed with premium upgrades, completely move-in ready, and even **includes a full stainless steel appliance package with the refrigerator!** From the sun-drenched open layout to the high-end tilework, this home truly has it all.

### Exceptional Home Features:

- **The Main Level:** A bright, open-concept layout with upgraded flooring flowing seamlessly throughout. The gourmet kitchen showcases elegant quartz countertops and stainless steel appliances.
- **Indoor-Outdoor Living:** The adjoining Great Room features a cozy electric fireplace and opens directly to a massive **16' x 10' rear deck**—your perfect private retreat to relax and unwind.
- **The Upper Level:** Three generously sized bedrooms and two full baths, all enhanced with upgraded ceramic tile and plush, comfortable carpeting.

All square footage is approximate. Renderings are artist's conceptions and may vary slightly from the actual home. Homes may be built in reverse of plans shown, depending on site conditions. Minor architectural changes may be made occasionally at the option of the builder. Please contact your Sales Consultant for details.



Trimble Meadows Homesite #175 - 3 Finished Levels - Move in for \$0



NOTE: All renderings are for illustrative purposes only and not part of a legal contract. Although all illustrations and specifications are believed correct at time of publication, accuracy cannot be guaranteed. The right is reserved to make changes.

MH898 0113

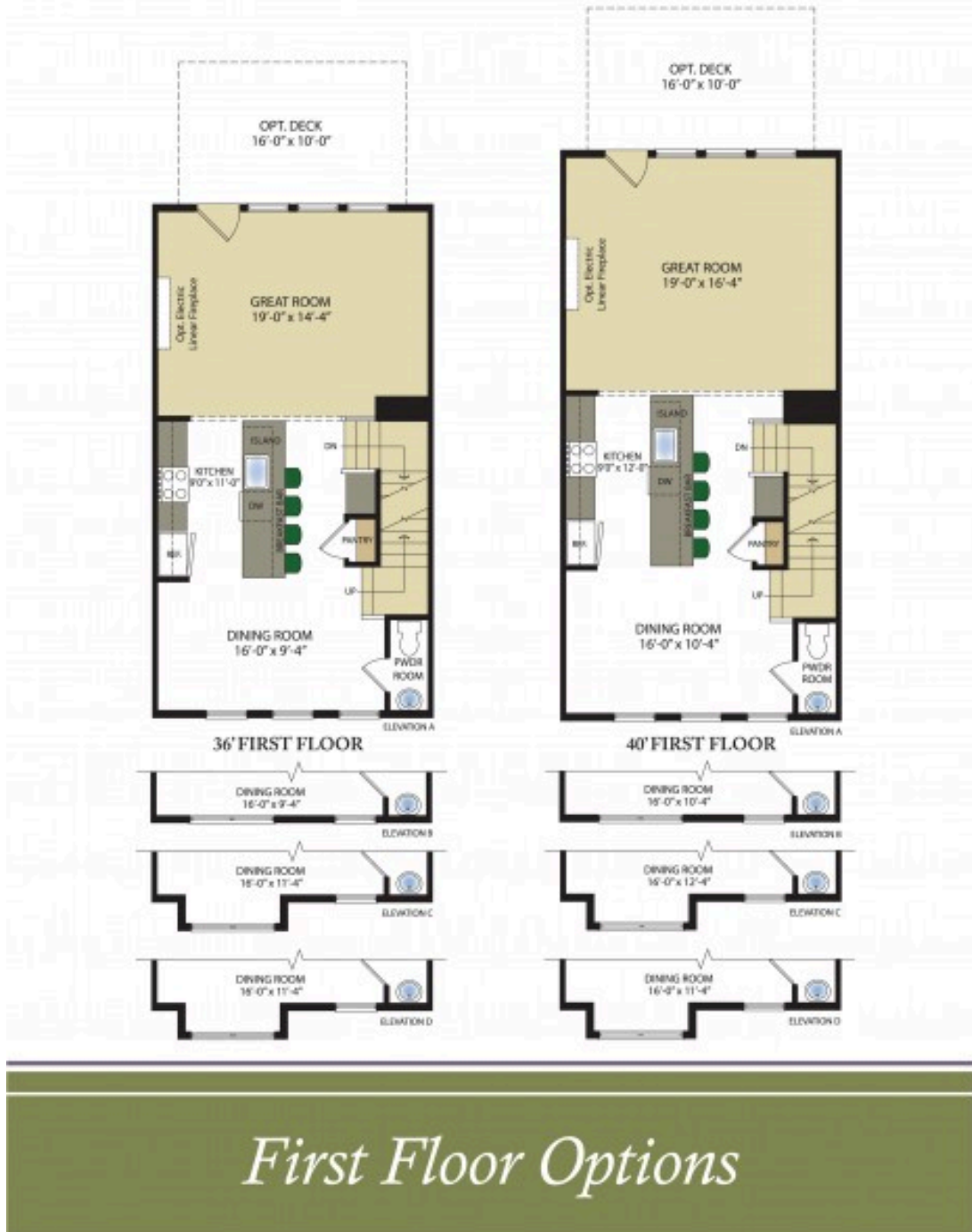


1/24

*Finished Basement Options*

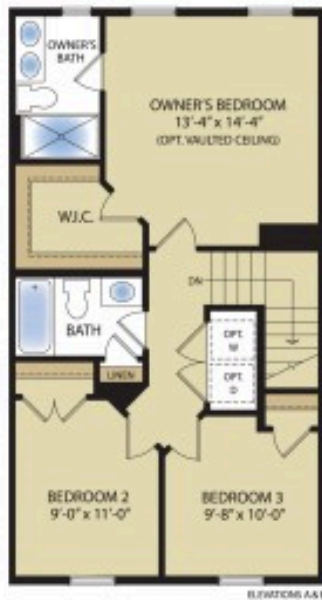
All square footage is approximate. Renderings are artist's conceptions and may vary slightly from the actual home. Homes may be built in reverse of plans shown, depending on site conditions. Minor architectural changes may be made occasionally at the option of the builder. Please contact your Sales Consultant for details.

Trimble Meadows Homesite #175 - 3 Finished Levels - Move in for \$0

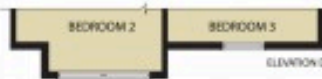


All square footage is approximate. Renderings are artist's conceptions and may vary slightly from the actual home. Homes may be built in reverse of plans shown, depending on site conditions. Minor architectural changes may be made occasionally at the option of the builder. Please contact your Sales Consultant for details.

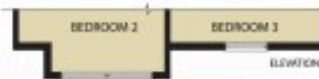
Trimble Meadows Homesite #175 - 3 Finished Levels - Move in for \$0



36' SECOND FLOOR



40' SECOND FLOOR



*Second Floor Options*

All square footage is approximate. Renderings are artist's conceptions and may vary slightly from the actual home. Homes may be built in reverse of plans shown, depending on site conditions. Minor architectural changes may be made occasionally at the option of the builder. Please contact your Sales Consultant for details.